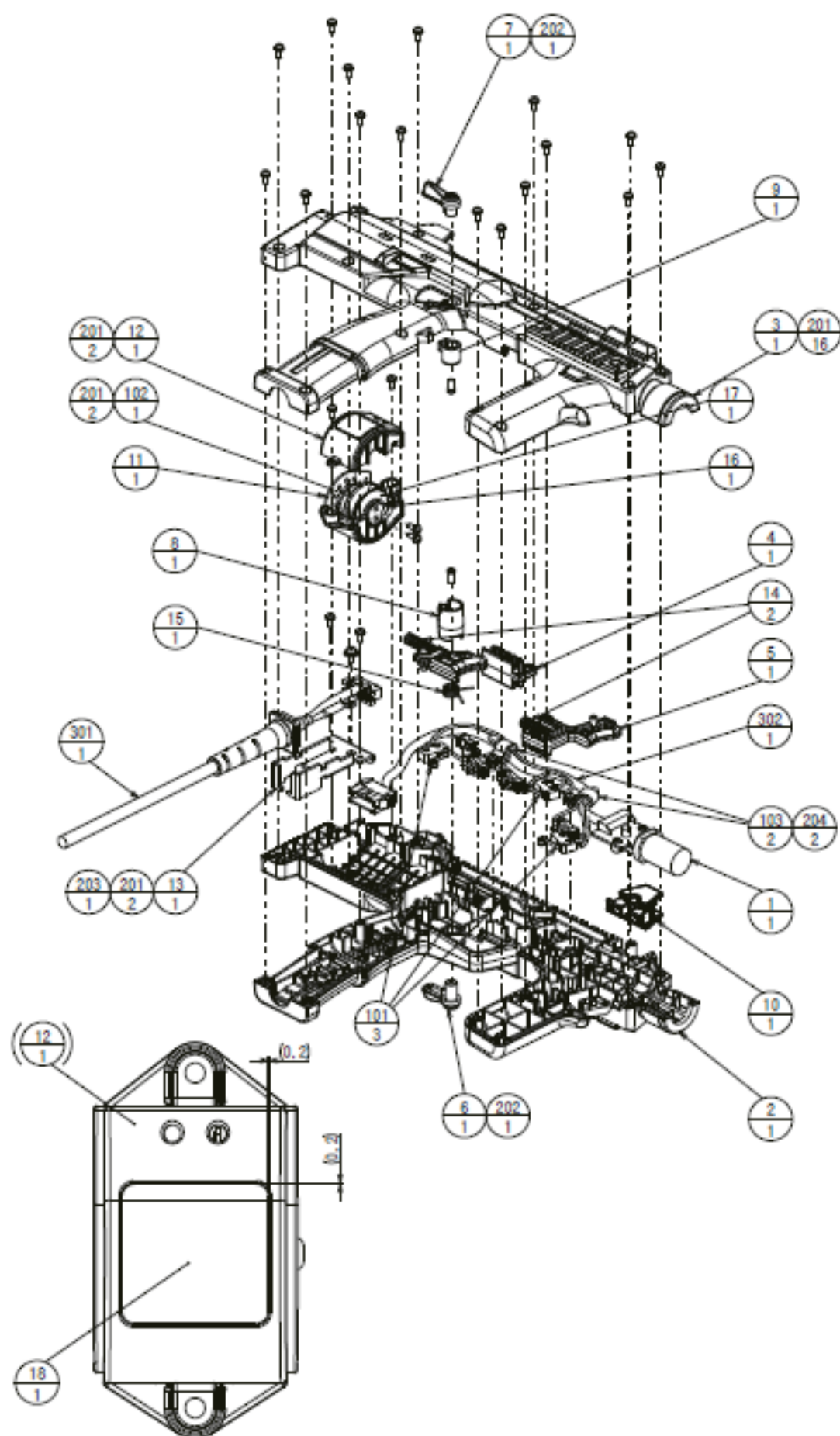


(36) HDZ-2100  
CONTROL UNIT

(D-1/2)



(12)に対する(18)の貼り付け位置

**(36) HDZ-2100  
CONTROL UNIT**

**(D-2/2)**

|     |               |                              |
|-----|---------------|------------------------------|
| 1   | GLG-2130X     | SENSOR UNIT (OMJ-GZH200HFXA) |
| 2   | HDZ-2101      | CONTROLLER COVER L           |
| 3   | HDZ-2102      | CONTROLLER COVER R           |
| 4   | HDZ-2103      | MAIN TRIGGER                 |
| 5   | HDZ-2104      | SUB TRIGGER                  |
| 6   | HDZ-2105      | SELECTOR LEVER L             |
| 7   | HDZ-2106      | SELECTOR LEVER R             |
| 8   | HDZ-2107      | SELECTOR JOINT L             |
| 9   | HDZ-2108      | SELECTOR JOINT R             |
| 10  | HDZ-2109      | FRONT SIGHT                  |
| 11  | HDZ-2110      | VS COVER L                   |
| 12  | HDZ-2111      | VS COVER R                   |
| 13  | HDZ-2112      | CABLE BRKT                   |
| 14  | HDZ-2113      | TRIGER SPRING                |
| 15  | HDZ-2114      | SELECTOR SPRING              |
| 16  | HDZ-2115      | VS CUSHION L                 |
| 17  | HDZ-2116      | VS CUSHION R                 |
| 18  | 440-WS0179XJP | STICKER W HI TEMP M          |
| 101 | 509-6469      | SW MICRO TYPE (SS-5GL2) W/WH |
| 102 | 130-5315      | VIBRATOR DU2003F             |
| 103 | 280-5124-05   | NYLON CLAMP NKO5             |
| 201 | FAS-000092    | M SCR PH W/SMALL FS BLK M3x8 |
| 202 | FAS-120020    | TAP SCR PH #2 CRM 3x8        |
| 203 | 000-P00408-W  | M SCR PH W/FS M4x8           |
| 204 | 000-P00308-W  | M SCR PH W/FS M3x8           |
| 301 | HDZ-60001     | WH CONTROLLER                |
| 302 | HDZ-60002     | WH CONTROL UNIT              |